

Open Application Programming Interface for CFD

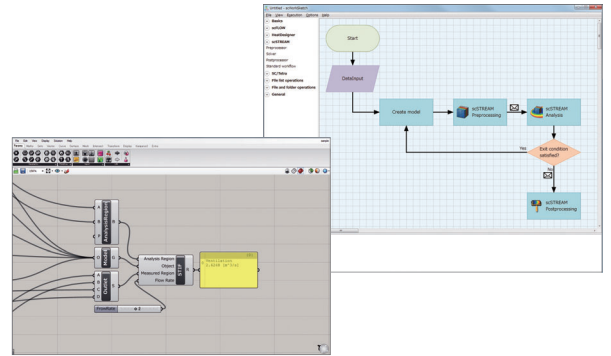
Flexibility to customize, integrate, automate and extend your simulation with Visual Basic

What is it?

Advanced functionality that provides you with all the deep programmatic controls you need to customize applications using Visual basic from Microsoft.

Capabilities

- **Create customized CFD operations, processes & applications**
Drive standard simulation processes that meet your needs.
- **Automate fluid simulation processes & operations**
Speed up and automate simulation execution routines.
- **Integrate tools and processes together**
Integrate disparate systems and information together to meet your process needs.
- **Extend your simulation with apps your users need**
Wrap your simulation in the user experience your users need.



Example

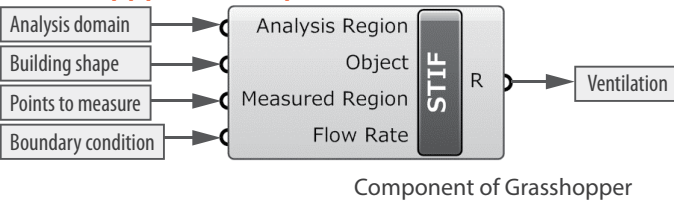
Closely integrate design & simulation

With a rich API, it's possible to integrate tools & accelerate standard processes, in this case bringing together design & simulation with Grasshopper & scSTREAM.

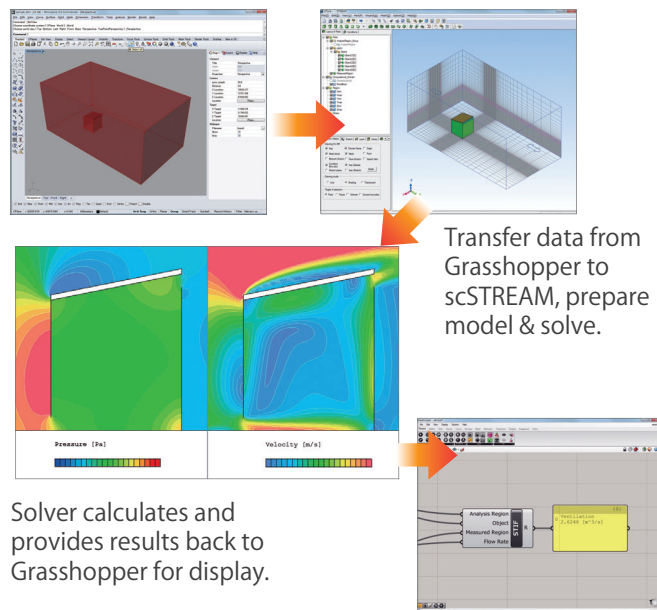


Grasshopper

Example: Integrate CFD simulation into Grasshopper user experience & environment



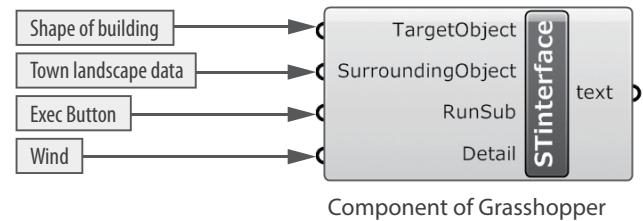
Component of Grasshopper



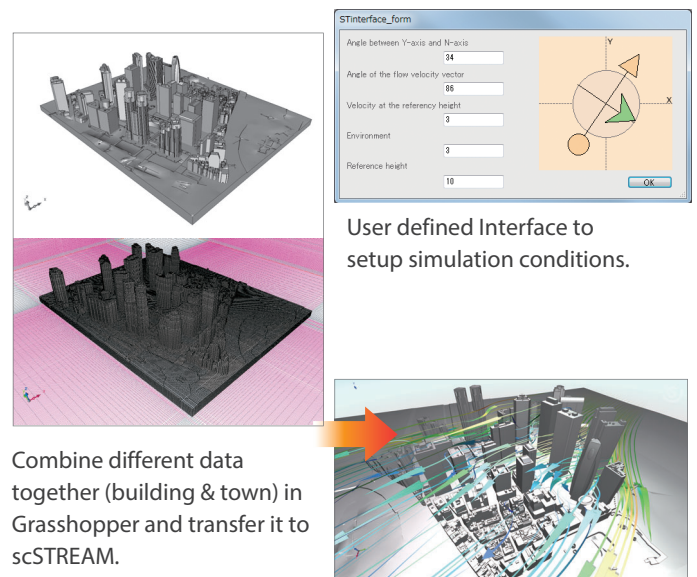
Solver calculates and provides results back to Grasshopper for display.

The results are shown in Grasshopper.

Example : Embed automated CFD simulation processes into a new user experience



Component of Grasshopper



User defined Interface to setup simulation conditions.

Combine different data together (building & town) in Grasshopper and transfer it to scSTREAM.

Calculate and show result in scSTREAM.