

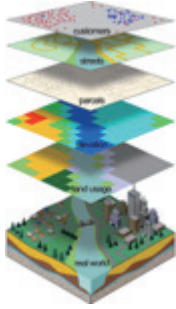
Outdoor Environmental Simulation using GIS data

scSTREAM function

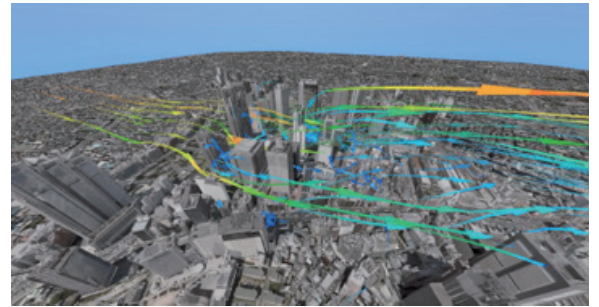
Using geographic data for more accurate analysis

Outline

Within various graphical data in GIS data, the topography, buildings and trees can be read as an analysis model. Also, the shape created by native format of BIM-CAD or by general format can be read as well.

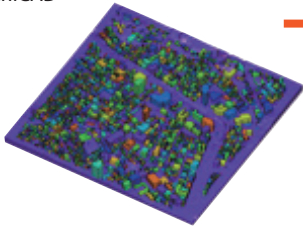


- **Geographical data**
 - Latitude and longitude
- **Shapes**
 - Terrain
 - Buildings
 - Trees
- **Materials**
 - Ground surface
 - (Buildings)
- **Settings**
 - Traffic > Heat load
 - > Gas concentration

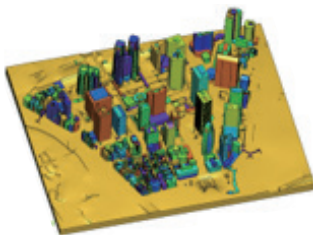


Importing topography and building data

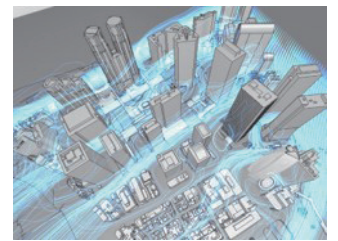
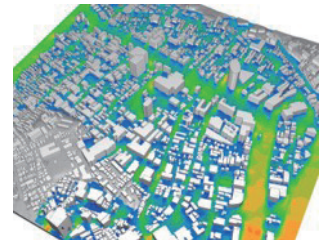
- Autodesk® Revit® Architecture
- GRAPHISOFT ArchiCAD
- CATIA
- ProE
- Solidworks
- (and more)



- Parasolid
- STEP
- SHAPE (GIS)

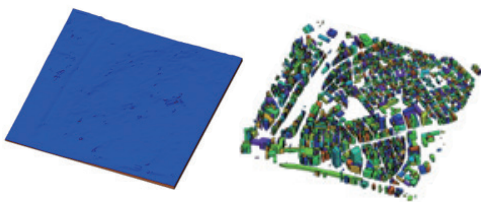


Analysis result

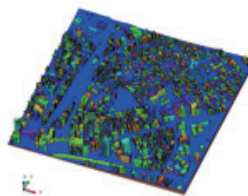


Combining topography data and building data

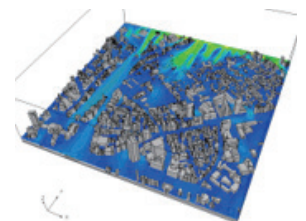
Topography + Building



Combined by scSTREAM



Analysis result



Combine