

Analysis of a World Solar Challenge Racing Car

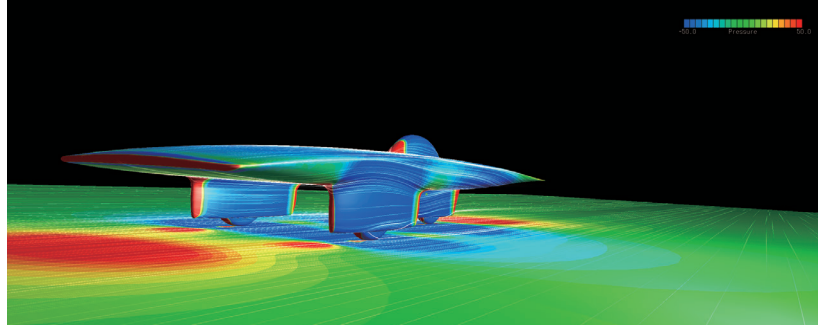
SC/Tetra for Effective Aerodynamic Analysis

SC/Tetra is three dimensional thermal fluid analysis software developed by Software Cradle Co., Ltd. that is used by customers all over the world. SC/Tetra is renowned for being a highly practical and accurate analysis tool.

SC/Tetra excels at accurate representation of geometry. Engineers can use the tool to conduct automotive aerodynamic analysis, or evaluate the performance of rotating machinery such as fans and turbines.

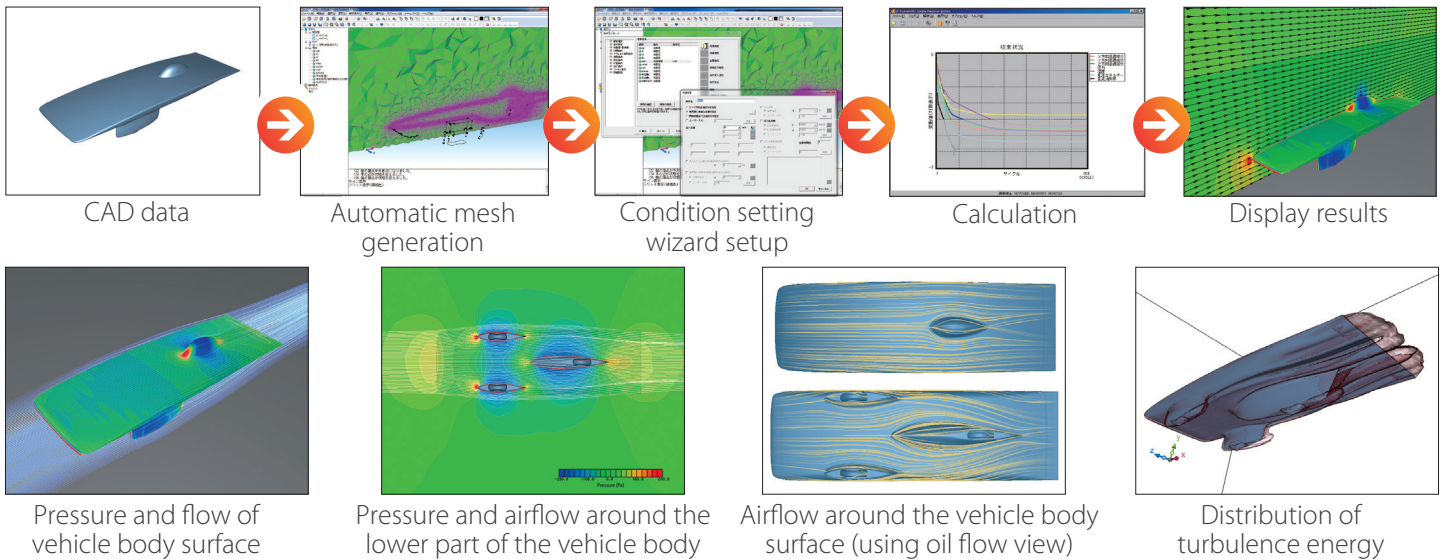


2013 Tokai Challenger places the second at the World Solar Challenge



2011 Tokai Challenger places the second at the World Solar Challenge

Analysis Process for the Tokai Challenger



SC/Tetra helps engineers to visualize the invisible airflow and identify the pressure distribution

Analysis of the Tokai Challenger (Pressure and Airflow Around the Lower Part of the Vehicle)

