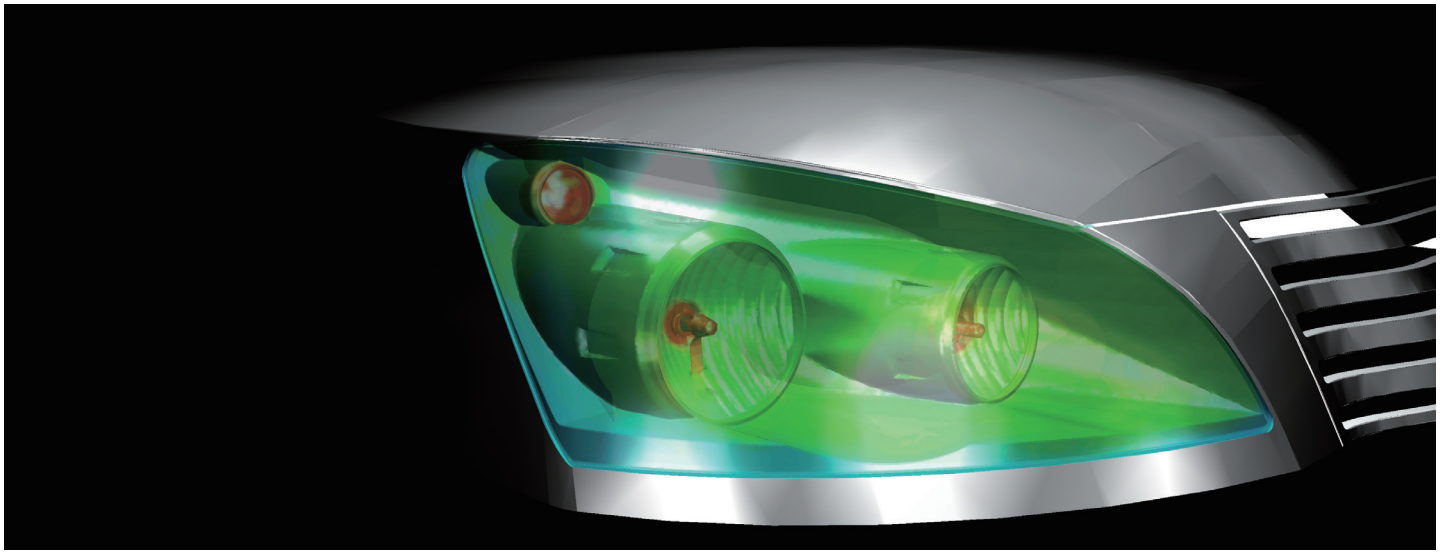
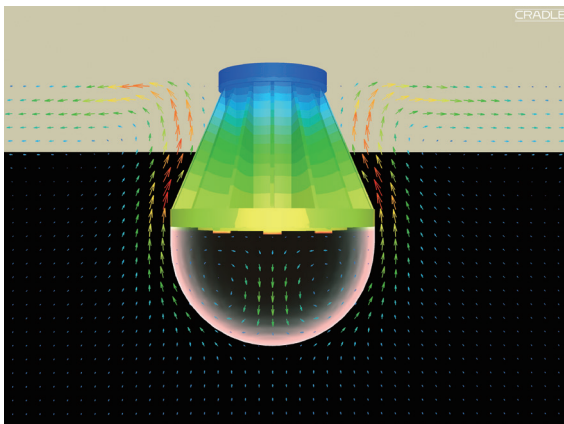


Heat Release Analysis of Lighting Equipment

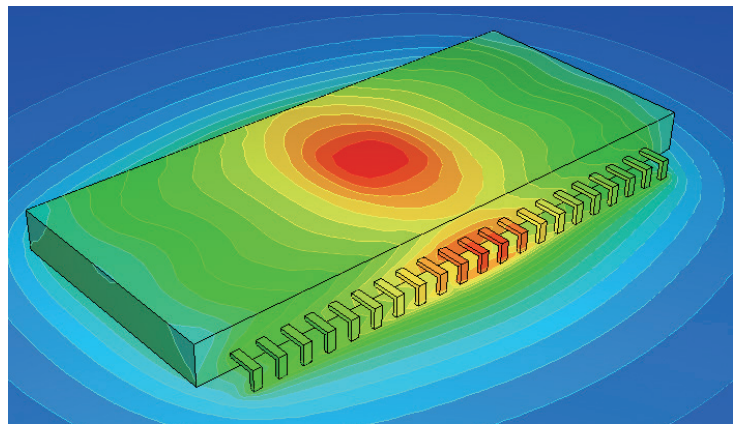
Case Studies of SC/Tetra, HeatDesigner, and scSTREAM



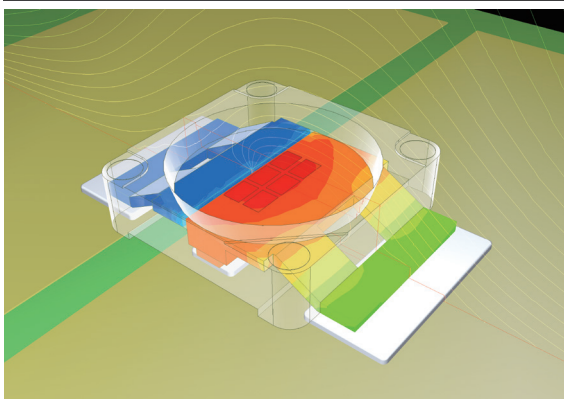
LED Bulb



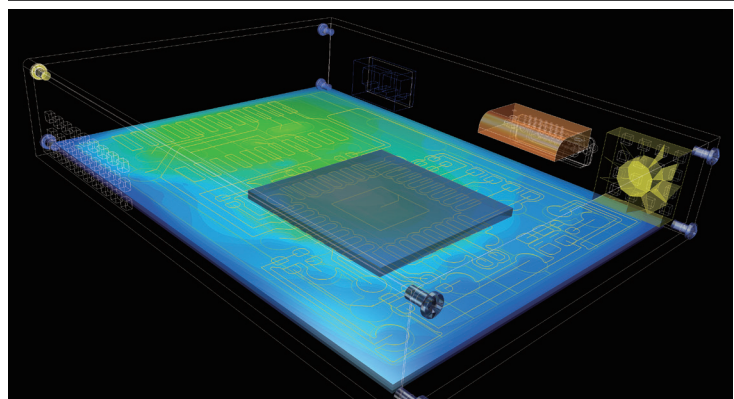
Semiconductor Devices



LED Devices



Heat Release Analysis Considering Gerber Data



Notes

It is a big challenge to effectively promote heat release from electronics components such as highly integrated LSI and LED, which is miniaturized further.

Thermal design is vital to develop high-quality products with more energy saving capability and longer duration. Simulation helps examine new ideas for thermal design specifically and clearly with visual insights.